



Your Single Source Water Treatment Supplier For The Plumbing Industry.™



FILTERED WATER



NO NEED FOR BOTTLED WATER!



SOFT WATER

SAFETY ZONE WATER SYSTEMS®
PRODUCT CATALOG & SUGGESTED RETAIL PRICE LIST
January 15, 2024

Dedicated to helping plumbing contractors improve their customer's water by providing top quality equipment, highly affordable prices and comprehensive water treatment training.

#1 Water Brand, Recommended By Plumbers™

WATER QUALITY PROBLEMS

*If you're dealing with water quality problems you've come to the right place.
Let us help you correct your water quality problems!*

Unsafe tap water

Fifty-two percent of all Americans say they suspect their tap water may not be safe. For this reason, consumers have flocked to bottle water for easy access to high quality drinking water.



Bottled water is expensive, heavy to carry home and billions of bottles in our landfill is surely not good for our environment.

Instead, please consider an under sink or whole house Safety Zone Water system.



Frustrated with your water?

If you are frustrated with your water, a trained Safety Zone plumbing professional can test your water and recommend ways to improve your water.



Undissolved soap film on shower walls and shower doors.

Common water quality problems:



Bad hair days from dissolved soap with hard water.



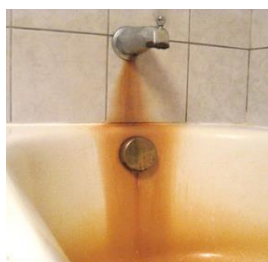
Dry skin with hard water.



Mineral deposits and hard water scale.



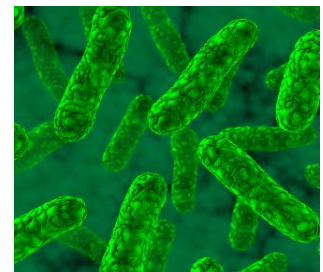
Harmful chemicals.



Iron stains.



Rotten egg odors.



Harmful Bacteria.

WHY SAFETY ZONE WATER®



Cutting edge designs!

Get the "best of the best" with our top quality, highly reliable water treatment systems.



40 years' experience!

With our extensive experience, you can rest assured Safety Zone Water systems will provide reliability and top quality performance.



Your best buy . . .

Considering price, performance, reliability and after-the-sale service.

Safety Zone Water Systems® are sold, installed and serviced by trained plumbing professionals.

You can trust our licensed plumbers to help you select the best system for your requirements and provide professional installation, start-up and after-the-sale service.



Made in America!

Components are manufactured in the United States, and systems are assembled in the State of Florida.



ON SUBSEQUENT PAGES PART NUMBERS IN RED ARE OUR MOST POPULAR MODELS

CITY WATER SYSTEMS

COMBINATION WHOLE HOUSE FILTER AND WATER SOFTENER



Two tank combo models

If you're looking for the "best of the best", our two-tank combo system is for you! Tank #1 is the **non-electric** filter with more media for longer life. Tank #2 is the water softener, so you get soft, filtered water from every faucet in your home.

Removes / Reduces

Tank #1

- * Chlorine
- * Chloramines
- * Harmful chemicals
- * VOCs
- * Some heavy metals
- * Foul tastes and odors

Tank #2

- * Water hardness



Automatic backwashing valve.

Notice:

If an **automatic backwashing** whole house filter is desired, order the water softener and **automatic** whole house filter separately. (See page 5 for filters and page 11 for softeners.)

Electronic Models	Description	List Price
COMBO-2-100	Two tank combo model with WC-100 water softener & non-electric WHF-100-NE filter	\$3,575
COMBO-2-150	Two tank combo model with WC-150 water softener & non-electric WHF-150-NE filter	\$4,145
COMBO-2-100-A	Two tank combo model with WC-100 softener & automatic backwashing WHF-100-A filter	\$4,245
COMBO-2-150-A	Two tank combo model with WC-150 softener & automatic backwashing WHF-150-A filter	\$4,945
Models with our RM valve with Bluetooth Technology		
COMBO-2-100-RM	Two tank combo model with WC-100-RM water softener & non-electric WHF-100-NE filter	\$3,575
COMBO-2-150-RM	Two tank combo model with WC-150-RM water softener & non-electric WHF-150-NE filter	\$4,145

Single tank combo model (softener + filter)

Removes / Reduces

Filter media (top layer)

- * Chlorine
- * Chloramines
- * Harmful chemicals
- * VOCs
- * Some heavy metals
- * Foul tastes and odors

Softening resin (bottom layer)

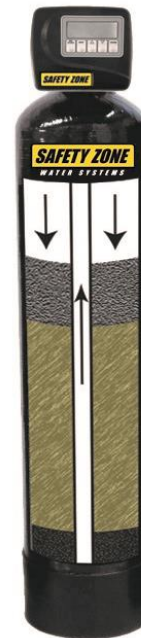
- * Removes water hardness



Ideal system when space is an issue. Provides filtered water and soft water for whole house water quality improvement.

Filter media →
(KDF plus catalytic activated carbon)

Iron Exchange resin →
Removes water hardness.



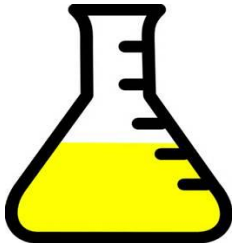
"Space-Saver" Model.



Electronic Model	Bluetooth Model	Description	List Price
COMBO-1-150	COMBO-1-150-RM	Single tank combo model with resin, KDF and catalytic carbon; 10x54	\$2,695
COMBO-1-200	COMBO-1-200-RM	Single tank combo model with resin, KDF and catalytic carbon; 12X52	\$2,995
COMBO-1-250	COMBO-1-250-RM	Single tank combo model with resin, KDF and catalytic carbon; 13X54	\$3,495
COMBO-1-300	COMBO-1-300-RM	Single tank combo model with resin, KDF and catalytic carbon; 14X65	\$4,495

CITY WATER SYSTEMS

REMOVES / REDUCES / ELIMINATES



CHLORINE



HARMFUL CHEMICALS



FOUL ODORS



BAD TASTES



NO NEED FOR BOTTLED WATER!

Automatic models with backwashing valve.



Catalytic granular activated carbon is used for long life and top performance.



KDF Media is used to improve performance and prevent the carbon bed from fouling.



Select our electronic valve or our new RM valve with Bluetooth technology for smart phone set up, adjustments and monitoring.

Electronic Models	Automatic backwashing whole house filters with catalytic carbon, KDF and electronic valve	List Price
WHF-100-A	Whole house automatic filter with catalytic carbon; 9x48 tank; with KDF	\$1,995
WHF-150-A	Whole house automatic filter with catalytic carbon; 10x54 tank; with KDF	\$2,395
WHF-200-A	Whole house automatic filter with catalytic carbon; 12x52 tank; with KDF	\$2,750
WHF-250-A	Whole house automatic filter with catalytic carbon; 13x54 tank; with KDF	\$2,995
WHF-300-A	Whole house automatic filter with catalytic carbon; 14x65 tank; with KDF	\$3,995

Bluetooth Models	Automatic backwashing whole house filters with catalytic carbon, KDF and RM valve	List Price
WHF-100-A-RM	Whole house automatic filter with catalytic carbon; 9x48 tank; with KDF	\$2,275
WHF-150-A-RM	Whole house automatic filter with catalytic carbon; 10x54 tank; with KDF	\$2,550
WHF-200-A-RM	Whole house automatic filter with catalytic carbon; 12x52 tank; with KDF	\$2,995
WHF-250-A-RM	Whole house automatic filter with catalytic carbon; 13x54 tank; with KDF	\$3,495
WHF-300-A-RM	Whole house automatic filter with catalytic carbon; 14x65 tank; with KDF	\$4,250

Non-Electric Models - WHF-NE

No electrical power or drain needed!



Catalytic Activated Carbon



KDF Specialty Media

Removes / Reduces:

- * Chlorine
- * Chloramines
- * Harmful chemicals
- * Tastes
- * Odors
- * Some heavy metals
- * VOCs



No Jacket



With Jacket

Our non-electric models come with catalytic activated carbon and KDF filter media. No electrical power or drain required!

Model	Description	List Price
WHF-100-NE	Whole house non-electric filter with catalytic carbon; 9x48 tank; with KDF	\$1,325
WHF-100-NE-J	Whole house non-electric filter with catalytic carbon; 9x48 tank; with KDF; jacket	\$1,525
WHF-150-NE	Whole house non-electric filter with catalytic carbon; 10x54 tank; with KDF	\$1,595
WHF-200-NE	Whole house non-electric filter with catalytic carbon; 12x52 tank; with KDF	\$1,995
WHF-250-NE	Whole house non-electric filter with catalytic carbon; 13x54 tank; with KDF	\$2,695
WHF-300-NE	Whole house non-electric filter with catalytic carbon; 14x65 tank; with KDF	\$3,450

Safety Zone Water™ Non-Electric Systems For SALT-FREE Whole House Water Treatment.

Looking for an alternative to a conventional water softener?

Check out our two-tank and single tank salt free water treatment systems and get two water treatments for one affordable price!

Here's what you get:

- * Whole house filter with Catalytic activated carbon and KDF to remove Chlorine, Chloramines, tastes, odors, heavy metals and harmful chemicals.
- * No-salt, scale inhibitor to protect your plumbing and expensive appliances by preventing scale formation. No scale, no salt! Enjoy filtered water from every faucet!

How it works - Two-Tank system

Tank 1

Step A

In tank #1, harmful impurities, tastes and odors are removed or reduced using our NSF certified Catalytic coconut shell activated carbon to provide filtered water from every faucet in your home.

Step B

Still in tank #1, the water treatment process continues with our KDF filter media, designed to enhance the performance of the activated carbon, remove heavy metals and protect the carbon bed from bacterial growth.

Tank 2

The final water conditioning treatment occurs in tank #2, where our special scale and rust inhibitor prevents scale formation by placing a passive coating on pipes and wetted surfaces to inhibit scale formation.



Two-Tank combination salt free conditioner & whole house filter. (Also available with tank jackets.)

Single-Tank Salt Free whole house filter & scale inhibitor with jacket.

Two-Tank Salt-Free scale inhibitor and whole house filter for city water

List Price

Model	Description	List Price
SZ-SFWCF-2-100	Two-tank salt free scale inhibitor & whole house filter; Includes WHF-100-NE & SZ-SFWC-100-NE .	\$3,075
WHF-100-NE	Tank #1: Whole house filter; non electric; 9x48 tank; comes with catalytic carbon & KDF	\$1,325
SZ-SFWC-100-NE	Tank #2: Salt free scale inhibitor; 9x48 tank; non-electric	\$1,750
SZ-SFWCF-2-100-J	Two-tank salt free scale inhibitor & whole house filter; with decorative tank jackets; 9x48 tanks	\$3,475
WHF-100-NE-J	Tank #1: Whole house filter; non electric; 9x48 tank; comes with catalytic carbon & KDF; with jacket	\$1,525
SZ-SFWC-100-NE-J	Tank #2: Salt free scale inhibitor; 9x48 tank; non-electric; with jacket	\$1,950
SZ-SFWCF-2-150	Two-tank salt free scale inhibitor & whole house filter; 10x54; Includes WHF-150-NE & SZ-SFWC-150NE	\$3,490
WHF-150-NE	Tank #1: Whole house filter; non electric; 10x54 tank; comes with catalytic carbon & KDF	\$1,595
SZ-SFWC-150-NE	Tank #2: Salt free scale inhibitor; 10x54 tank; non-electric	\$1,895
SZ-SFWCF-2-150-J	Two-tank salt free scale inhibitor & filter; jackets; 10x54; Includes WHF-150-NE-J & SZ-SFWC-150NE-J	\$3,890

Single Tank Salt-Free scale inhibitor and whole house filter for city water

SZ-SFWCF-150-NE	Single-tank salt free scale inhibitor and whole house filter; 10x54; non-electric; no jacket	\$2,695
SZ-SFWCF-150-NE-J	Single-tank salt free scale inhibitor and whole house filter; 10x54; non-electric; with tank jacket	\$2,895
SZ-SFWCF-250-NE	Single-tank salt free scale inhibitor and whole house filter; 13x54; non-electric	\$3,695
SZ-SFWCF-300-NE	Single-tank salt free scale inhibitor and whole house filter; 14x65; non-electric	\$4,750

Safety Zone Water® Systems with Automatic Backwashing Valve for SALT-FREE Whole House Water Treatment.

Looking for an alternative to a conventional water softener?

Check out our no salt water treatment system and get two water treatments for one affordable price!

Here's what you get:

1. Whole house filter with Catalytic carbon and KDF to remove Chlorine, Chloramines, taste, odors, heavy metals and harmful chemicals.
2. No-salt, scale inhibitor to protect your plumbing and expensive appliances, by preventing scale formation.

Backwashing valve to automatically refresh the filter media routinely for optimum performance.

How it works!

Step A - Whole house filtration

The water treatment process starts in the top of our filter / conditioning tank, where, your water is treated with our KDF filter media, designed to enhance the performance of the activated carbon, remove some heavy metals and protect the carbon bed from bacterial growth.

Step B - Whole house filtration

Next, harmful impurities are removed or reduced using our NSF certified Catalytic coconut shell activated carbon to provide filtered water from every faucet in your home.

Removes

- Harmful chemicals
- VOCs
- Some Heavy metals
- Chlorine
- Chloramines
- Bad tastes
- Foul odors
- Inhibits bacterial growth



System above shown with protective tank jacket.

Step C - Scale Inhibitor

The final water conditioning treatment process occurs in the bottom part of the tank, where our special scale and rust inhibitor prevents hard water scale formation by placing a passive coating on pipes and wetted surfaces. No salt and no need to buy bottled water with Safety Zone Salt-Free water systems!

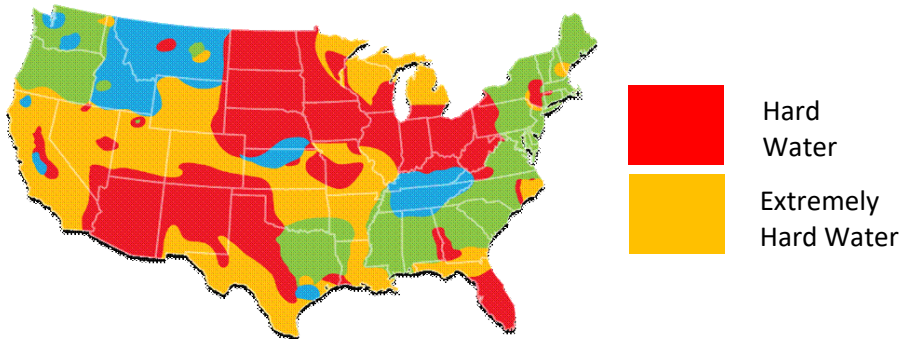
Part Number	Description	List Price
SZ-SFWCF-150-A*	Automatic backwashing whole house filter and scale inhibitor; 10x54 tank without jacket	\$3,495
SZ-SFWCF-150-A-J	Automatic backwashing whole house filter and scale inhibitor; 10x54 tank; decorative jacket	\$3,695
SZ-SFWCF-250-A	Automatic backwashing whole house filter and scale inhibitor; 13x54; automatic	\$4,495
SZ-SFWCF-300-A	Automatic backwashing whole house filter and scale inhibitor; 14x65; automatic	\$5,750

*Same prices with RM valve.

Heater Guard™ with Whole House Filter from Safety Zone Water®. Protects your water heater from scale build-up and provides whole house filtration to remove Chlorine, harmful chemicals, taste & odors.

The problem

Virtually all of the State of Florida has either “hard” or “extremely hard” water. For this reason, water related appliances and particularly water heaters are at risk because they are not protected from damage caused by hard water scale. (See “hard water map”, below.)



20" Dual Filter



10" Dual Filter

Most water heater manufacturers require scale inhibiting treatment in hard water areas, and in some instances your warranty may be voided if treatment for water hardness is not provided.

How it works!

The Safety Zone Water Heater Guard system and whole house filter provides two-stage treatment.

Stage 1

The first treatment is whole house filtration to remove Chlorine, harmful chemicals, tastes and odors from your water. If you drink bottled water, this costly expense is no longer needed!

Stage 2

During the second treatment, Poly Phosphate is used to inhibit scale formation so your water heater and other water related appliances are no longer at risk from scale build-up and damage from water hardness.



Protect your water heater and enjoy whole house filtration with Heater Guard™ systems from Safety Zone Water!

Removes Chlorine, harmful chemicals, taste, odors and inhibits scale formation.

Models	Description	List Price
Heater Guard 10	Two stage system with 10" scale inhibitor cartridge and 10" carbon block cartridge for filtration	\$895
Heater Guard 20	Two stage system with 20" scale inhibitor cartridge and 20" carbon block cartridge for filtration	\$1,595
Heater Guard 20x3	Three stage system with 20" scale inhibitor, 20" carbon block & 20" pleated sediment cartridge	\$1,795
C-4X10-PP	10" scale inhibitor cartridge	\$265
C-4X20-PP	20" scale inhibitor cartridge	\$495
C-4X10-CBC	4X10 carbon block cartridge	\$79.00
C-4X20-CBC	4x20 carbon block cartridge	\$159.00
C-4X20-P-20	4x20 pleated cartridge, 20 micron	\$129.00

SAFETY ZONE WATER SOFTENERS



"EZ" METERED VALVE

With our new budget priced "EZ" metered valve everything is simple and ever so easy!



ELECTRONIC METERED

Our highly popular electronic metered valve comes with all the features you need for a successful installation.



ELECTRONIC METERED VALVE WITH REMOTE MONITORING

Our new "RM" metered valves with Bluetooth technology. Make adjustments on your phone.



Looking for an economical valve that's easy to set-up with no valve programming required? If so, check out our new "EZ" valves for top performance and simplicity. The softener EZ valve is metered for efficient operation. The time clock version is best suited for whole house filters. Simply set the time and turn the knob to advance through the settings for your initial start-up. After the initial regen, the operation is automatic.



Our metered electronic valves are highly popular and provide high performance in a variety of areas. They are durable, and available in 1", 1-1/4", 1-1/2" and 2" pipe sizes. All cycles are adjustable to provide the ability to adjust the valve's functions to meet individual requirements.

Our electronic control valves are an excellent choice for water softeners, whole house filters, air draw Iron filters, Sulfur filters, sediment filters and acid



Our Remote Monitoring valves utilize Bluetooth® technology to be able to make adjustments to the valve using your smart phone. Simply stand by the valve and set time, hardness and other settings without even removing the valve cover! All settings are adjustable, and RM valves are your best choice when you want to stand out from the competition. RM valves are ideal for softeners, whole house filters and air draw applications for well water.

SAFTEY ZONE WATER® FEATURES & BENEFITS

Forty years' experience!

With our extensive experience, you can rest assured our systems will provide top quality performance, greater efficiency and offer the best value, considering price and performance!



By-pass valve.

All residential Safety Zone systems come with a by-pass valve.

Brine tanks.

Brine tanks come with a brine well and safety float to prevent brine water overflow.

Manufactured in USA.

Safety Zone Water components are manufactured in the USA, and our systems are assembled in Ocala, Florida.



Metered valves for greater efficiency.

Our softener valves are metered so the resin cleaning process is based on water usage, not time. This provides greater efficiency so our water softeners use less salt and less water.

Installed by trained plumbing and water treatment professionals.

Safety Zone systems are installed by licensed plumbers and water treatment professionals. We also provide excellent after-the-sale service!

Limited warranty.

Ten years on tanks and five years on valves. See warranty for more details.

SOFT WATER BENEFITS



Get totally clean with soft water!



No "bad hair days" with soft water.



Softer skin.



No mineral deposits.



No soap scum.



No hard water scale.



Brighter laundry.



No Iron*

*Our water softeners remove clear water Iron up to 2 PPM.

SAFETY ZONE WATER SOFTENERS



- * RM valve with Bluetooth® technology.
- * This allows you to make adjustments on your smart phone
- * Valve adjustments are so easy even you can do it!
- * Settings may be adjusted remotely or manually
- * Valves are metered for great efficiency (uses less water & salt)
- * By-pass is included
- * 1" for flow rates to 27 GPM
- * Weather cover included

Safety Zone water softeners; RM electronic valve; Bluetooth technology; remote monitoring option

List Price

Model	Description	List Price
WC-100-RM	Water conditioner / softener; 1.0 cube; 9x48 tank with 1" metered valve	\$2,250
WC-100-CAB	Water conditioner / softener; 1.0 cube; cabinet model; gray	\$2,550
WC-150-RM	Water conditioner / softener; 1.5 cube; 10x54 tank with 1" metered valve	\$2,550
WC-150-TANNIN-RM	Water conditioner / softener; 1.5 cube; 10x54 tank; Tannin resin; 1" metered valve	\$2,795
WC-200-RM	Water conditioner / softener; 2.0 cube; 12x52 tank with 1" metered valve	\$2,850
WC-250-RM	Water conditioner / softener; 2.5 cube; 13x54 tank with 1" metered valve	\$3,150
WC-300-RM	Water conditioner / softener; 2.5 cube; 14x65 tank with 1" metered valve	\$3,990



- * Our electronic valve settings are fully adjustable
- * This allows you to meet each customer's specific requirements
- * Valves are metered for greater efficiency (uses less water and salt)
- * By-pass is included
- * 1" for flow rates to 27 GPM
- * Available in 1", 1-1/4", 1-1/2" and 2" sizes
- * Highly durable
- * Easy to service

Safety Zone water softeners with electronic valve for greater efficiency

List Price

Model	Description	List Price
WC-100	Water conditioner / softener; 1.0 cube; 9x48 tank with 1" metered valve	\$2,250
WC-100-CAB	Water conditioner / softener; 1.0 cube; cabinet model; gray; metered valve	\$2,550
WC-150	Water conditioner / softener; 1.5 cube; 10x54 tank with 1" metered valve	\$2,550
WC-150-TANNIN	Water conditioner / softener; 1.5 cube; 10x54 tank; Tannin resin; 1" metered valve	\$2,795
WC-200	Water conditioner / softener; 2.0 cube; 12x52 tank with 1" metered valve	\$2,850
WC-250	Water conditioner / softener; 2.5 cube; 13x54 tank with 1" metered valve	\$3,150
WC-300	Water conditioner / softener; 3.0 cube; 14x65 tank with 1" metered valve	\$3,990
WC-300-125	Water softener; 3 cube; 90,000 grain capacity; 14x65 tank; 1.25" metered valve	\$4,500
WC-300-15	Water softener; 3 cube; 90,000 grain capacity; 14x65 tank; 1.5" metered valve	\$7,500
WC-400-15	Water softener; 4 cube; 160,000 grain capacity; 16x65 tank; 1.5" metered valve	\$7,995
WC-500-15	Water softener; 5 cube; 150,000 grain capacity; 18x65 tank; 1.5" metered valve	\$9,495
WC-700-15	Water softener; 7 cube; 210,000 grain capacity; 21x62 tank; 1.5" metered valve	\$10,750
WC-1000-15	Water softener; 10 cube; 300,000 grain capacity; 24x72 tank; 1.5" metered valve	\$14,750
WC-10000-2	Water softener; 10 cube; 300,000 grain capacity; 24x72 tank; 2" metered valve	\$16,995



- * No confusing electronics
- * Easy to install
- * Easy to start-up (simply turn the knob through the various cycles)
- * Easy to set time
- * By-pass and weather cover are included

Water softeners with "EZ" metered valves

List Price

Model	Description	List Price
WC-100-EZ	Water conditioner / softener; 1.0 cube; 9x48 tank; 1" with EZ metered valve	\$1,995
WC-150-EZ	Water conditioner / softener; 1.5 cube; 10x54 tank with 1" EZ metered valve	\$2,295
WC-200-EZ	Water conditioner / softener; 2.0 cube; 12x52 tank with 1" EZ metered valve	\$2,495

SAFETY ZONE WELL WATER SYSTEMS

COMPREHENSIVE WATER TESTING IS ESSENTIAL!

(It is imperative to check for Iron, Hydrogen Sulfide, low pH, signs of bacteria, tannin and organics.)

Attention plumbers!

If you are serious about water treatment and have customers on well water, our Deluxe Field Test Kit is recommended to help you determine the proper equipment for your customer's requirements. This kit tests for water hardness, pH, Iron, Chlorine and total dissolved solids.

Part number:

DFTK

Our best test kit for well water.



Two "Air Draw" systems for greater oxidation and superior performance.



Iron Trapper™

Sulfur Shield™

Iron Trapper™ Systems

This system removes Iron, Sulfur and Manganese without the use of chemicals using our "air draw" valve, providing bacteria is not present in your water. Otherwise, if you are dealing with bacteria, chemical treatment is most likely necessary.

Note: Filling pools with an Iron filter may exceed the capacity of a residential Iron filter.

Sulfur Shield™ systems

Preferred system to remove "rotten egg odors" from Hydrogen Sulfide with no, or low levels of Iron. This system is installed **after** a water softener, so the softener will remove low levels of clear water Iron (up to 2 ppm)



RM valve with Bluetooth® technology.

With RM air draw valves, the air is introduced below the valve into the tank to prevent Iron build up in the valve.



Acid Neutralizer

Prevents corrosion due to low pH.

Iron Trapper™ systems

List Price

ISF-150-AD	Iron & Sulfur filter with air draw valve; 10x54 tank; comes with water & air checks	\$2,395
ISF-150-AD-RM	Iron & Sulfur filter with RM air draw valve; 10x54 tank; with water & air checks	\$2,495

Sulfur Shield™ systems to remove Hydrogen Sulfide (rotten egg odors)

SF-150-AD	Sulfur filter with air draw valve; 10x54 tank; comes with water & air checks	\$2,495
SF-150-AD-RM	Sulfur filter with RM air draw valve; 10x54 tank; comes with water & air checks	\$2,795
SF-250-AD	Sulfur filter with air draw valve; 13x54 tank; comes with water & air checks	\$3,195
SF-250-AD-RM	Sulfur filter with RM air draw valve; 13x54 tank; comes with water & air checks	\$3,295

Acid neutralizers

AN-150-DH-A	Acid neutralizer with 10x54 dome hole tank; with backwashing valve	\$1,995
AN-150-DH-RM	Acid neutralizer with 10x54 dome hole tank; with RM backwashing valve	\$2,050
AN-150-DH-NE	Acid neutralizer with in/out head; 10x54 dome hole tank; non-electric	\$1,295

Sediment filters

WHF-SED-100-A	Automatic whole house sediment filter with backwashing valve; 9x48 tank	\$1,795
WHF-SED-150-A	Automatic whole house sediment filter with backwashing valve; 10x54 tank	\$1,995

DRINKING WATER SYSTEMS



RO-4 system with quick change cartridges. (Storage tank included.)



High capacity under sink filter.
(No extra faucet needed.)



5-Stage Conventional RO System.
(Storage tank included.)



USF-3
Three Stage with Sediment, Carbon
& UF membrane.



USF-2
Two-Stage
Sediment & Carbon.



Faucet for purified water.
Chrome or brushed nickel.

Drinking water systems

List Price

RO-4	Reverse osmosis drinking water system; with storage tank; faucet additional	\$849
RO-4-P	Reverse osmosis system with non-electric pump & storage tank; faucet additional	\$895
RO-5	Reverse osmosis system with standard cartridges and membranes. Tank included.	\$749
USF-1	Single cartridge filter (for under sink or drinking water fountains)	\$149
USF-2	Two-stage under sink filter for city water; faucet additional	\$229
USF-3	Three-stage under sink filter for well water; faucet additional	\$349
USF-HCF	High capacity filter for cold water line. No extra faucet needed; 10,000 gallons capacity.	\$375
USF-HCF-HEAD	High capacity filter head.	\$69
USF-HCF-RC	High capacity filter replacement cartridge	\$269
USF-HCF-BKT	High capacity filter bracket	\$19

Faucets

F-C	Premium faucet; chrome; non-air gap	\$115
F-BN	Premium faucet; brushed nickel; non-air gap	\$139

Replacement quick change cartridges and filter heads

QCC-SED	Quick change cartridge, sediment	\$39
QCC-CBC	Quick change cartridge, carbon block	\$49
QCC-GAC	Quick change cartridge, granular activated carbon	\$49
QCC-ROM	Quick change cartridge, RO membrane	\$159
QCC-UFM	Quick change cartridge, UF membrane	\$85
IN-LINE-MINERAL	10" in-line cartridge for demineralization (install in 1/4" tubing running to RO faucet)	\$95



UV-12

UV Purifier

Ideal system for well water containing bacteria for chemical-free water treatment. Kills bacteria, cysts, viruses and other harmful microorganisms.

Whole house UV Purifier (kills bacteria without chemicals)

List Price

UV-12	UV purifier, 12 GPM; 3/4" NPT	\$1,495
UV-12-LAMP	UV-12 replacement lamp	\$179
UV-12-SLEEVE	UV-12 replacement sleeve	\$129

TEST KITS & TEST STRIPS

WATER TESTING IS ABSOLUTELY ESSENTIAL TO KNOW WHAT TO RECOMMEND WHEN AND WHY!



Deluxe Field Test Kit
(Shows you're a "PRO")



Test Strips
(Quick & Easy!)



NEW!
MINI Deluxe Field
Test Kit
Strips & Drop Bottle

RECOMMENDED TESTING CITY WATER

- * Water hardness
- * Chlorine
- * pH

- * Water hardness
- * pH
- * Iron

On well water, determine if bacteria is in your water and smell / test for Hydrogen Sulfide (Sulfur odors).

Test kits, test strips and demo kits

List Price

		List Price
TK-NITRATES	Test kit for Nitrates	\$139.00
TS-3	Test strips for Chlorine, pH and water hardness.	\$48.00
TS-IRON	Test strips for Iron.	\$48.00
DFTK	Deluxe field test kit, Includes tests for water hardness, Chlorine, Iron, pH and TDS.	\$567.00
DFTK-MINI	MINI Deluxe test kit. Strips & drop bottle for hardness; strips for Iron, Chlorine, pH.	\$267.00
TK-BACTERIA	15 minute test for bacteria	\$89.00
TS-HS	Test strips for Hydrogen Sulfide (to check level when you smell rotten egg odors).	\$42.00
TS-HP	Test strips for Hydrogen Peroxide.	\$39.00
DK-PRECIP	Demo kit to demonstrate hardness precipitation	\$149.00
SOAP-DEMO	Demo kit to demonstrate soap's effectiveness in soft water vs. hard water.	\$169.00

SPECIALTY PRODUCTS

NO BOTTLE



Bottle-less water dispenser.
Connects directly to cold water line.
Dispenses hot and cold water.
Stainless steel tank.
Optional filtration (see below).



Optional three stage filter to remove bacteria, chlorine, harmful chemicals, tastes and odors.



Room Air Purifier.

Kills viruses, mold and bacteria. Fights Allergies!
(Designed for up to 1,000 sq. ft. of floor space.)

Bottle-less Water Dispenser for home or office

List Price

WD-B	Water dispenser for hot & cold water; black	\$1,195
WD-W	Water dispenser for hot & cold water; white	\$1,195

Room air purifier & filter. (Provides six-stage filtration.)

RAP-1000	Six-stage room purifier. Kills viruses, bacteria; removes VOCs, dust, pollen, odors	\$2,475
----------	---	---------

FILTER HOUSINGS & FILTER CARTRIDGES

Filter Kit
Part number:
FK-BB-10-1
FK-BB-20-1

- Includes:**
- * Filter housing
 - * Bracket
 - * Wrench
 - * Bolts
 - * Washers



Applications

Whole house filtration for:

- * Sediment
- * Chlorine
- * Tastes
- * Odors
- * Iron & rust particles

Pre-filter for water softener

Order cartridges separately (see below).

Filter housings & installation kit (cartridges ordered separately)

List Price

FK-BB-10-1	Filter kit with 10" BB housing; 1" NPT with bracket, wrench, bolts and washers	\$265.00
FK-BB-20-1	Filter kit with 20" BB housing; 1" NPT with bracket, wrench, bolts and washers	\$319.00
FH-BB-10-1	10" Big-Blue filter housing; 1" NPT; with pressure release	\$175.00
FH-BB-20-1	20" Big-Blue filter housing; 1" NPT; with pressure release	\$239.00



Pleated
(Ideal for sediment)



Melt Blown
(Ideal for slime)



Carbon Block
(Removes Chlorine, chemicals, tastes & odors.)

Filter cartridges

C-4X10-CBC	4X10 carbon block cartridge	\$79.00
C-4X20-CBC	4x20 carbon block cartridge	\$159.00
C-4X10-P-20	4X10 pleated cartridge, 20 micron	\$64.00
C-4X20-P-20	4x20 pleated cartridge, 20 micron	\$129.00
C-4X10-MB	4X10 melt blown cartridge, 25 micron	\$49.00
C-4X20-MB	4x20 melt blown cartridge, 25 micron	\$89.00



Install filter in the blue tubing after RO and before faucet.

In-line filter

IN-LINE-MINERAL	In line mineral cartridge to boost pH, post RO treatment, with 1/4" quick connect fittings	\$95
-----------------	--	------

SAFETY ZONE HOME WATER TREATMENT PLANT



Chemical feed pump.



**Hose bib for water sampling.
(Install directly after contact tank.)**



**System with 13x54 contact tank.
(Be sure to use weather covers outdoors.)**

The "Home Water Treatment Plant" is the ideal system for problem water to provide safe, great tasting water. If you are dealing with bacteria, high organics, Iron and Sulfur odors from Hydrogen Sulfide this system is for you! Standard equipment includes a chemical feed pump, 15 gallon solution tank, contact tank, carbon filter for chemical removal post treatment and water softener. Optional equipment includes Iron filter for high levels of

Home Water Treatment Plant with 13x54 contact tank using Hydrogen Peroxide. Part Number: HWTP-150-1354

List Price

CFP-ROLLER	Chemical pump; roller type; flow actuated, controlled by relay in electronic valve. 110 volt.	\$1,895
CT-13x54	13x54 contact tank for low levels of Iron. No bottom drain.	\$1,395
TANK-15	Solution tank; 15 gallon	\$175
HP-5	Hydrogen Peroxide, 5 gallon pail. (Package includes one five gallon pail.)	\$199
WHF-150-A	Whole house carbon filter for chemical removal; automatic; 10x54	\$2,395
WC-150	Water conditioner; 10x54 mineral tank; with brine tank	\$2,550
WC-SS-W & TS-HP	Two weather covers and test strips for Hydrogen Peroxide are included no charge.	Included

Iron filter, tannin softener and acid neutralizer are optional.

Total \$8,609

Home Water Treatment Plant with 80 gal. contact tank with bottom drain. Part No. HWTP-150-80

CFP-ROLLER	Chemical pump; roller type; flow actuated, controlled by relay in electronic valve. 110 volt.	\$1,895
CT-80	80 gallon contact tank for high levels of Iron, with bottom drain to flush Iron from the tank.	\$2,295
TANK-15	Solution tank; 15 gallon	\$175
HP-5	Hydrogen Peroxide, 5 gallon pail. (Package includes one five gallon pail.)	\$199
WHF-150-A	Whole house carbon filter for chemical removal; automatic; 10x54	\$2,395
WC-150	Water conditioner; 10x54 mineral tank; with brine tank	\$2,550
WC-SS-W & TS-3	Two weather covers and test strips for Chlorine are included no charge.	Included

Iron filter, tannin softener and acid neutralizer are optional.

Total \$9,509

Note: CFP-ROLLER pump is controlled by a relay in our electronic valve. If "RM" or EZ valves are used select a standard pump and use a flow switch.

WHOLE HOUSE CARTRIDGE FILTRATION



WHOLE HOUSE CARTRIDGE FILTER

- * Steel bracket
- * Housing for two 4"x 20" filter cartridges
- * Wrench to remove cartridges
- * 1" pipe fittings

(Cartridges additional - see below.)

Budget priced, dual-stage whole house cartridge filter

List Price

		List Price
WHF-D-20	Dual filtration system with pressure gauges & wrench. (Cartridges additional.)	\$795.00
C-4X20-P-20	4x20 pleated cartridge, 20 micron	\$129.00
C-4X20-CBC	4x20 carbon block cartridge	\$159.00

MAJOR SPARE PARTS for "ELECTRONIC" VALVES

Part number	Description	List Price
V3006	By-pass valve	\$100
WC-SS-W	Weather cover for valve; white	\$46
V3186-06	Transformer and power cord (standard)	\$82
V3186-05OD	Transformer and power cord (outdoor)	\$88
H4617	Red locking clip	\$2
V3408EE-04BOARD	PC board for water softener and Iron / Sulfur air draw filter	\$295
V3818TC-BOARD	PC board for time clock filter valves (not "air draw")	\$225
V3193-02	Service spanner wrench	\$40
V3005-02	Spacer stack assembly	\$125
V3011	Piston for water softener; down flow	\$39
V3174	Brine piston for water softener	\$25
V3162-022	Drain line flow control button; 2.2 gpm (for 9" & 10" tank)	\$8
V3162-027	Drain line flow control button; 2.7 gpm (for 12" tank)	\$8
V3162-053	Drain line flow control button; 5.3 gpm (for 13" tank)	\$8
V3162-075	Drain line flow control button; 7.5 gpm (for 14" tank)	\$8
V3010-1E	Injector for 9" and 10" tank; white	\$12
V3010-1F	Injector for 12" tank; blue	\$12
V3010-1G	Injector for 13" tank; yellow	\$12
V3010-1H	Injector for 14" tank; green	\$12
V3003	Meter assembly	\$120
H4615	Red clip for drain line and brine tubing fitting	\$4
V3150	Split ring for pipe fittings	\$4
V3105	O-ring 215 for pipe fittings	\$5
V3189	O-ring for bottom of valve or in / out head (2.5")	\$12
H4850-17.875	Brine well with safety float assembly (4"x30")	\$68
H7018	Poly bag with 4' brine line tubing, 4" cap and 2 pc. overflow fitting	\$20
G2195	Brine tank lid; 15x17; black	\$48
D1400	In / out head	\$89
V3004	Drive cap assembly	\$63
V3022	Stack puller	\$39
V3003-05	Meter assembly	\$32
V3107-01	Motor	\$49

See more on pg. 18.

COMPONENTS & SPARE PARTS

Pipe fitting kits for electronic valves

		List Price
V3007-01	Pipe fitting kit, Solvent weld; 3/4" / 1" combo. (Set of two)	\$26.00
V3007	Pipe fitting kit, NPT; 1" . (Set of two)	\$26.00
V3007-15	Pipe fitting kit, John Guest, 3/4" elbow	\$66.00
V3007-17	Pipe fitting kit, John Guest, 1" straight	\$92.00
V3007-07	Pipe fitting kit, Solvent weld; 1-1/4" / 1.5" combo. (Set of two)	\$48.00

Pipe fitting kits, transformers, PC boards, pistons, seal kits and extension cords for RM Series electronic valves

PF-RM-1-SLIP	Pipe fitting kit, solvent weld; 1" straight	\$32.00
PF-RM-1-NPT	Pipe fitting kit, NPT; 1" elbow	\$32.00
PF-RM-34-NPT	Pipe fitting kit; 3/4" NPT; straight	\$32.00
RM-TRANSFORMER	Transformer and power cord for RM valve	\$82.00
RM-EXTCORD	10" extension cord for RM valve	\$36.00
RM-SOFTBOARD	PC board for RM softener valves	\$179.00
RM-FILTERBOARD	PC board for RM filter valves	\$179.00
RM-IRONFILTBOARD	PC board for RM Iron aeration valves	\$179.00
RM-S-PISTON	Piston for RM softener and backwashing filter valves	\$89.00
RM-ADF-PISTON	Piston for RM aeration Iron filter valves (final rinse)	\$109.00
RM-SEALKIT	Seals and spacer kit for RM valves	\$49.00

Weather covers for electronic control valves

WC-SS-W	Weather cover for electronic valve, white (for outdoor installations)	\$46.00
---------	---	---------

Brine tanks

BT-15x17	Brine tank, square; black; 15" x 17" x 32"	\$366.00
BT-RB	Brine tank, round; black; 18" x 36"	\$500.00

Mineral tanks

MT-0948	Mineral tank, 9x48	\$366.00
MT-1054	Mineral tank, 10x54	\$433.00
MT-1252	Mineral tank, 12x52	\$593.00
MT-1465	Mineral tank, 14x65	\$1,166.00

Resin, carbons and filter media

RESIN-8	Resin, 8%; 1 CF	\$349.00
RESIN-TANNIN	Resin, tannin; micro porous; price per pound	\$39.00
CARBON-CAT	Catalytic coconut shell activated carbon, acid washed; 1 CF	\$533.00
CARBON-CS	Coconut shell activated carbon; 1 cu. ft. bag	\$400.00
IRON-FILTER-OX	Filter media for Iron, Hydrogen Sulfide & Manganese; 0.5 CF bag. (Use two bags per 10" tank.)	\$266.00
CALCITE	#50 bag	\$159.00
SEDIMENT	#50 bag	\$125.00
FLINT	#50 bag (for under bedding)	\$100.00
KDF-55-GRANULAR	KDF-55 granular for city water; price per pound	\$39.00
KDF-85-GRANULAR	KDF-85 granular for well water; price per pound	\$39.00
POLY PHOSPHATE	Poly Phosphate crystals; price per pound	\$75.00

Spare parts for electronic valves (Not RM)

V3408EE-04BOARD	P.C. board, softener valve	\$295.00
V3818TC-BOARD	P.C. board, filter valve	\$225.00
D1203	Upper basket	\$8.00
D1400	In-out head with parallel pipe fittings	\$100.00
V3006	By-pass assembly	\$100.00
V3005-02	WS1 EPDM SPACER STACK ASY	\$125.00
V3011	WS1 DOWNFLOW PISTON ASSY	\$39.00
V3174	WS1 Regenerate Piston	\$25.00
V3186-06	WS1 AC adapter; 120V - 12V (new style)	\$82.00
V3004	Drive cap assembly	\$63.00
V3193-02	Service spanner wrench	\$40.00
H-4700-30	Brine well with safety float and air check for brine tank	\$139.00
H-47018	Brine line tubing, brine well cap, overflow bolt and nut	\$24.00

Electronic valves for replacement (not sold individually unless for replacement).

SZ-V-SOFTENER	Metered softener valve; comes with by-pass, upper basket, drain flow control	CALL
SZ-V-ISF-AD	Air draw valve for Iron & Sulfur; comes with by-ass, basket; air and water checks	CALL
SZ-V-FILTER	Time clock filter valve; comes with by-pass, upper basket, drain line flow control	CALL

LIMITED WARRANTY

Safety Zone Water Systems

Safety Zone Water Systems (Manufacturer) are warranted to be free of defects in material and workmanship to the ORIGINAL residential purchaser. All aspects of this warranty are subject to the limitations, terms and conditions described below:

Duration

Water conditioner and whole house filter components, including valves, tanks and non-wear parts are covered under this warranty. Should failure occur due to defects in materials and workmanship, Manufacturer, at its sole discretion, will repair or replace the defective part or component for the duration of five years for valves; ten years on tanks; and five years on electrical components. Labor for parts replacement, service, shipping and handling charges are not included, and they are the customer's responsibility under the terms of this warranty.

Limitations of Coverage

This warranty extends only to the CONSUMER for damage resulting from defects in materials and workmanship, and does not include wear related damage, renewable or consumable components, such as seals, spacers, o-rings, ultraviolet lamps, filter cartridges, resin, neutralizing media, iron media, sediment media and granular activated carbon. Damage caused by the CONSUMER'S neglect or abuse, accident, rain, wind, heat, cold, ultraviolet light exposure, damage caused by acts of God, civil insurrection and extraordinary circumstances beyond the Manufacturer's control are not covered. Manufacturer shall not be liable for any direct or indirect damage resulting from the use of the Equipment, and this Warranty coverage shall not exceed the purchase price of the Equipment. This Limited Warranty excludes: 1. Any equipment not manufactured by the Manufacturer. 2. Equipment which has been altered by the CONSUMER or non-authorized service personnel. 3. Systems where date codes and serial numbers have been removed. Additionally, electrical components are not covered under the following circumstances: 1. Systems installed outside without a weather cover. 2. Systems where electrical connections are not properly shielded from the weather. 3. Systems installed outdoors, powered with an extension cord.

This limited warranty may not be transferred from the original owner to another individual.

Water quality

Manufacturer cannot know the characteristics of the customer's water quality. Furthermore, water characteristics may vary, over time. For these reasons, Manufacturer assumes no liability for product selection.

Claims

All claims for Warranty coverage must be accompanied by a copy of the purchase agreement, showing date of the original installation. If this is not available, a warranty card must be on file. Manufacturer reserves the right to inspect the equipment, prior to honoring any warranty claim. This Warranty gives CONSUMERS specific rights, and these rights may vary from state to state.

Contact information

Any and all claims should be directed to the Authorized Dealer in your area. If this information is not available, consumers may contact Safety Zone Water Systems, LLC at 352-492-9516.

Important

Once systems have been installed or partially installed, systems may not be returned for credit or refund unless they have been inspected by factory personnel and the return is authorized by Safety Zone Water Systems.

To request inspection call 352-492-9516 or email: sales@safetyzonewater.com.



Attention: Business Owner & Service Manager

PRSR STD
U.S. POSTAGE
PAID
ORLANDO, FL
PERMIT
#1478

Safety Zone Water Systems, LLC
2130 S.W. 7th Avenue
Suite 104
Ocala, FL 34471
Tel: 352-492-9516
www.safetyzonewater.com

Your Single Source Water Treatment Supplier For The Plumbing Industry.™



Free Water Treatment Training!

Increase your sales by helping your customers improve the quality of their tap water. Through this training you will learn:

- * How to identify water quality problems and sales opportunities.
- * Water testing (city water, well water and drinking water).
- * What system to recommend.
- * What price to recommend to maintain profitability and still remain highly competitive.
- * How to install and start-up water softeners, whole house filters & drinking water systems.

Stop the madness!

Don't let water dealers in your area sell water treatment systems to *your* customers. Sign up for our water treatment training today!

Note: List prices are Manufacturer's Suggested Selling Prices, exclusive of installation.

Get your share of the water quality improvement business.

Contact us today!

sales@safetyzonewater.com / Call 352-492-9516

